
SOUTHWEST REGION SCHOOLS 2015 FALL INSERVICE



EFFECTIVE CLASSROOM INSTRUCTION • READING FOCUS • IMPROVING COMMUNICATION

The Southwest Region School District is committed to all students receiving an education that continuously affirms human diversity, that validates the history and culture of all ethnic groups, that is based on high expectation for academic success for every student, and that encourages students and parents active participation.

Leadership August 10-12 :: **Special Ed./Yup'ik** August 13 :: **New Staff** August 14-15 :: **All Staff** August 17-19

LEADERSHIP INSERVICE SCHEDULE OF EVENTS

Note to Site Administrators: Inservice for site administrators and district office personnel begins at 8:00 AM on Monday, August 10, 2015. This year we will continue something from past years. In order to preserve our group time for meaningful discussion relevant to the whole group, we are asking that all site administrators travel into Dillingham on Sunday, August 9. On Monday afternoon site administrators will rotate through district office departments to pickup paperwork and meet with departments heads individually.

Our meeting this fall will again focus on maintaining momentum with initiatives started in recent years, maintaining instructional programs and continuing work to adapt changes in the areas of assessment and evaluation.

MONDAY - AUGUST 10, 2015

| TIME | TOPIC | LOCATION | PRESENTER/FACILITATOR |
|------------------|---|-----------------|--|
| 7:30AM - 8:00AM | Breakfast | D.O. Board Room | D.O. Staff |
| 8:00AM - 8:30AM | Welcome • In-Service Agenda Overview | | Dave & Steve N. |
| 8:30AM - 9:00AM | Our Vision • Review of District Focus & Six Goals | | Administrative Team |
| 9:00AM - 12:00PM | Evaluation Handbook & Administrator Evaluation • New handbook & requirements • Focus elements, data sources and cultural standards | | Steve N., Kyle, Dianna, Charles & Esther |
| 1:00PM -4:30PM | Site Meetings (Rotation by Department) | D.O. Offices | D.O. Staff |

| | | 1:00PM - 1:30PM | 1:30PM - 2:00PM | 2:00PM - 2:30PM |
|---------------------|--------------------------------|-----------------------|-----------------------|-----------------------|
| Aleknagik | LUNCH 12:00PM-1:00PM | Fed. Pgm/Student Sup. | Yupik | SpEd |
| Ekwok | | Yupik | SpEd | Tech / Instruction |
| Twin Hills | | SpEd | Tech / Instruction | Maintenance |
| Koliganek | | Tech / Instruction | Maintenance | Superintendent |
| New Stuyahok | | Maintenance | Superintendent | Business Office |
| Manokotak | | Superintendent | Business Office | Fed. Pgm/Student Sup. |
| Togiak | | Business Office | Fed. Pgm/Student Sup. | Yupik |

| | 2:30PM - 3:00PM | 3:00PM - 3:30PM | 3:30PM - 4:00PM | 4:00PM - 4:30PM |
|---------------------|--------------------|-----------------------|-----------------------|-----------------------|
| Aleknagik | Tech / Instruction | Business Office | Superintendent | Maintenance |
| Ekwok | Maintenance | Fed. Pgm/Student Sup. | Business Office | Superintendent |
| Twin Hills | Superintendent | Yupik | Fed. Pgm/Student Sup. | Business Office |
| Koliganek | Business Office | SpEd | Yupik | Fed. Pgm/Student Sup. |
| New Stuyahok | Student Support | Tech / Instruction | SpEd | Yupik |
| Manokotak | Yupik | Maintenance | Tech / Instruction | SpEd |
| Togiak | SpEd | Superintendent | Maintenance | Tech / Instruction |

| | | | |
|--------|---------------------------|-------------|--|
| 5:00PM | Dinner On Your Own | Restaurants | |
|--------|---------------------------|-------------|--|

LEADERSHIP INSERVICE SCHEDULE OF EVENTS

TUESDAY - AUGUST 11, 2015

| TIME | TOPIC | LOCATION | PRESENTER/FACILITATOR |
|------------------|--|-----------------|----------------------------------|
| 7:30AM - 8:00AM | Breakfast | D.O. Board Room | |
| 8:00AM - 8:30AM | Meeting Schedules & Protocols, Work Calendars, Leave Slips & Communication | ↓ | Dave & Steve N. |
| 8:30AM-9:15AM | Staff Development Plan •Inservice days & "Trade Days" •State-Mandated Trainings & Safe Schools | | Dave, Steve N. & Jon |
| 9:15AM - 10:00AM | Student Data •School Intel - reports & iPad visualizations •CRDC reporting •Release of AMP data in October | | Kyle, Dave & Steve N. |
| 10:15AM-12:00PM | Special Education | | Sherry |
| 12:00PM - 1:00PM | LUNCH | | |
| 1:00PM-1:30PM | CTE & Federal Programs •Bristol Bay Career & Technical Education Center •Homeless Identification | | Jon & Steve I. |
| 1:30PM - 2:00PM | Technology •New student laptop rollout •iPad cabinet keys, use and imaging | | Les, Corey & Steve N. |
| 2:00PM - 3:00PM | Academic Vocabulary Assessment | | Steve N., Dianna, Charles & Kyle |
| 3:00PM-4:00PM | Student Activities | | Steve N. & Cody |
| 5:00PM | Dinner on your own | | |

WEDNESDAY - AUGUST 12, 2015



Gerry Briscoe is in his 38th year as an educator (elementary teacher, elementary principal, Dist. Literacy Coordinator, Educational Consultant). Gerry has served the state of Alaska for the last 8 years at SERRC (Southeast Regional Resource Center) in the Alaska Comprehensive Center as a liaison to the National Center on Teacher Quality and the Center on Innovations in Learning. He is currently the Director of Project CREATE, an Alaska Native Education Program grant to develop cultural indicators for the AK Cultural Standards for Educators for teacher evaluation. Mr. Briscoe is a nationally certified trainer in the Marzano Model of Teacher Evaluation. Gerry and his wife have been married for almost 40 years and he is the proud Grandpa of 10!

| TIME | TOPIC | LOCATION | PRESENTER/FACILITATOR |
|------------------|---|-----------------|----------------------------|
| 7:30AM - 8:00AM | Breakfast | D.O. Board Room | |
| 8:00AM - 12:00PM | Marzano Inter-Rater Reliability Training | ↓ | Gerry Briscoe |
| 12:00PM - 1:00PM | LUNCH | | |
| 1:00PM - 3:00PM | Marzano Inter-Rater Reliability Training | | Gerry Briscoe |
| 3:00PM - 3:30PM | iObservation Fidelity (tentative) | | Steve N. |
| 3:30PM - 4:00PM | Curriculum Resources | | Steve N., Charles & Dianna |
| 4:30PM | Travel to Site | | |

SPECIAL EDUCATION & YUP'IK STUDIES INSERVICES

Note to Special Ed. & Yup'ik Studies Staff: Inservice for staff begins at 8:00 AM on Thursday, August 13, 2015. Site administrators, please communicate travel plans to the Special Education & Yup'ik Studies departments and plan for staff to be in Dillingham the evening of the 12th so that we can start first thing in the morning. We will be using computers, so please be sure to have your laptop and power cord with you.

THURSDAY - AUGUST 13, 2015: SPECIAL EDUCATION

| TIME | TOPIC | LOCATION | PRESENTER/FACILITATOR |
|------------------|--|-----------------|-----------------------|
| 7:30AM - 8:00AM | Breakfast | D.O. Board Room | |
| 8:00AM - 8:30AM | Welcome, Introductions & Review Agenda | ↓ | Sherry |
| 8:30AM - 12:30AM | TIENET Training | | Sherry & Kyle |
| 12:30PM - 1:30PM | Lunch | | Staff |
| 1:30PM - 3:00PM | WJ IV Training | | Sherry |
| 3:00PM - 4:00PM | Policy & Procedures | | Sherry |
| | <ul style="list-style-type: none"> • Confidentiality • Child Find • Brigance Screenings • Hearing/Vision Screenings • Case Load Assignments • Section 504 • ESY Services • Related Services Schedule | | |

THURSDAY - AUGUST 13, 2015: YUP'IK STUDIES

| TIME | TOPIC | LOCATION | PRESENTER/FACILITATOR |
|-------------------|--|-----------------|-----------------------|
| 7:30AM - 8:00AM | Breakfast | D.O. Board Room | |
| 8:00AM - 8:30AM | Welcome & Introductions | ↓ | Esther |
| 8:30AM - 9:00AM | Review Agenda of New Teacher Orientation | | Esther |
| 9:00AM - 10:00AM | Discuss Salmon Cycle - Any Yup'ik Traditions? | | Esther |
| 10:10AM - 11:00AM | Cross-cultural Communications from a Yup'ik Perspective | | Esther |
| 11:00AM - 12:00PM | Surface & Deep Culture | | Esther |
| 12:00PM - 1:00PM | Lunch | | Staff |
| 1:00PM - 1:30PM | Yup'ik Studies Program: Student Outcomes | | Esther |
| 1:30PM - 2:00PM | Why is subsistence is a matter of survival? | | Esther |
| 2:00PM - 3:30PM | Ways to Work with New Teachers | | Esther |
| 3:30PM - 4:00PM | Sharing Ideas | | Esther |

NEW STAFF INSERVICE SCHEDULE OF EVENTS

Note to New Staff: Inservice for new staff begins at 8:00 AM (breakfast at 7:30AM) on Friday, August 14, 2015 as we have a couple of very busy days planned. Please coordinate your travel with your site administrator and plan to be in Dillingham the evening of the 13th so that we can start first thing in the morning on the 14th. Activities on Saturday may be altered due to inclement weather, but please come prepared to spend some time outside, possibly in the rain. If you need assistance while traveling, please do not hesitate to contact your site administrator or district office for assistance.

FRIDAY - AUGUST 14, 2015

| TIME | TOPIC | LOCATION | PRESENTER/FACILITATOR | |
|-------------------|--|-----------------|---|-------|
| 7:30AM - 8:00AM | Breakfast | D.O. Board Room | | |
| 8:00AM - 8:15AM | Welcome | ↓ | David Piazza | |
| 8:15AM - 8:30AM | In-Service Agenda Overview | | Steve N. | |
| 8:30AM - 9:00AM | Highly Qualified | | Jon | |
| 9:00AM - 10:50AM | Group Session #1 •K-5/6: Technology & Powerschool •6/7-12: Curriculum | | Les, Corey, Kyle, Steve, Dianna & Charles | |
| 10:50AM - 11:00AM | BREAK | | | |
| 11:00AM - 11:15AM | Assessments | | Steve I. | |
| 11:15AM - 12:00PM | Business Office | | Ryan & Denise | |
| 12:00PM - 1:00PM | LUNCH | | Staff | |
| 1:00PM - 3:00PM | Group Session #2 •K-5/6: Curriculum •6/7-12: Technology & Powerschool | | Les, Corey, Kyle, Steve, Dianna & Charles | |
| 3:00PM - 3:05PM | BREAK | | | |
| 3:05PM - 4:00PM | Survive & Thrive in Rural Alaska | | Steve I. & Steve N. | |
| | Dinner (on your own) | | local restaurants | Staff |

SATURDAY - AUGUST 15, 2015

| TIME | TOPIC | LOCATION | PRESENTER/FACILITATOR |
|------------------|---|-----------------|-----------------------|
| 7:30AM - 8:00AM | Breakfast (District Office Boardroom) | D.O. Board Room | Staff |
| 8:00AM - 8:15AM | Housekeeping | ↓ | Steve Noonkesser |
| 8:15AM - 10:15AM | Introduction to Teaching in Rural Alaska | | Esther Ilutsik |
| 10:15AM - 1:00PM | Outdoor Activity: outdoor activities and lunch | | D.O. Staff |
| 1:00PM - 3:00PM | Introduction to Teaching in Rural Alaska | | Esther Ilutsik |
| 3:00PM - 4:00PM | ED456 Class Registration | | Esther Ilutsik |
| | BBQ at District Office (salmon, hotdogs & hamburgers) | | Staff |

ALL STAFF INSERVICE SCHEDULE OF EVENTS

Note to Returning Staff Members: Please plan to be in Dillingham at District Office by Sunday night, as we have a busy few days planned and a lot of important topics to cover. Contact your site administrator for travel times and arrangements.

MONDAY - AUGUST 17, 2015

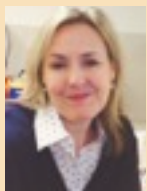
OVERVIEW OF DAILY SCHEDULE

(NOTE: Dillingham Elementary School is noted as DES in schedules)

| TIME | TOPIC | LOCATION | PRESENTER/FACILITATOR |
|------------------|--|---------------|---------------------------------|
| 7:00AM - 7:45AM | Breakfast | DES Cafeteria | |
| 8:00AM - 8:30AM | Welcome, Introductions & Review of Progress | DES Gym | David Piazza & Steve Noonkesser |
| 8:45AM - 12:00PM | Breakout sessions | see below | |



Cindy Paxton is iasfdfsdfasdfsdfasdfsadf



Anji Gallanos is iasfdfsdfasdfsdfasdfsadf

BREAKOUT SESSIONS

8:45AM - 12:00PM

| | | | |
|--------------------------|---|---------------|--------------|
| Grades K-5/6 | Reading Mastery | Cindy Paxton | DES Gym |
| Grades 6/7-12 | Content Area Reading Strategies (Social Studies, Science, Lang. Arts, Math & CTE) | Anji Gallanos | DES Comp Lab |

| | | | |
|------------------|-------|---------------|--|
| 12:00AM - 1:00PM | Lunch | DES Cafeteria | |
|------------------|-------|---------------|--|

1:00PM - 4:00PM

| | | | |
|--------------------------|---|---------------|--------------|
| Grades K-5/6 | Reading Mastery | Cindy Paxton | DES Gym |
| Grades 6/7-12 | Content Area Reading Strategies (Social Studies, Science, Lang. Arts, Math & CTE) | Anji Gallanos | DES Comp Lab |

| | | | |
|--------|--------------------|-------------------|--|
| 5:00PM | Dinner on your own | local restaurants | |
|--------|--------------------|-------------------|--|

ALL STAFF INSERVICE SCHEDULE OF EVENTS

TUESDAY - AUGUST 17, 2015

OVERVIEW OF DAILY SCHEDULE

(NOTE: Dillingham Elementary School is noted as DES in schedules)

| TIME | TOPIC | LOCATION | PRESENTER/FACILITATOR |
|------------------|--|---------------|-----------------------|
| 7:00AM - 7:45AM | Breakfast | DES Cafeteria | |
| 8:00AM - 8:45AM | Awards, Special Recognition & Teacher of the Year | DES Gym | Dave & Steve N. |
| 8:45AM - 12:00PM | Breakout sessions | see below | |

BREAKOUT SESSIONS

8:45AM - 12:00PM

| | | | |
|--------------------------|--|-----------------------------------|-----------|
| Grades K-5/6 | Reading Mastery | Cindy Paxton | DES Gym |
| Grades 6/7-12 | Academic Vocabulary & Semester Assessments (Social Studies, Science, Lang. Arts, Math & CTE) | Anji, Charles, Steve N., & Dianna | SWRS D.O. |

| | | | |
|------------------|-------|---------------|--|
| 12:00AM - 1:00PM | Lunch | DES Cafeteria | |
|------------------|-------|---------------|--|

1:00PM - 4:00PM

| | | | |
|--------------------------|---|-----------------------------------|-----------|
| Grades K-5/6 | Reading Mastery | Cindy Paxton | DES Gym |
| Grades 6/7-12 | Collaborative Planning and Pacing Calendars (Social Studies, Science, Lang. Arts, Math & CTE) | Anji, Charles, Steve N., & Dianna | SWRS D.O. |

| | | | |
|--------|----------|---------------|--|
| 5:00PM | SWRS BBQ | DES Cafeteria | |
|--------|----------|---------------|--|

ALL STAFF INSERVICE SCHEDULE OF EVENTS

WEDNESDAY - AUGUST 19, 2015

SESSION OVERVIEW

| TIME | TOPIC | LOCATION | PRESENTER/FACILITATOR |
|-------------------|--------------------------------------|---------------|-----------------------------------|
| 7:00AM - 7:45AM | Breakfast | DES Cafeteria | |
| 8:00AM - 8:15AM | Announcements | DES Gym | Dave Piazza |
| 8:15AM - 9:15AM | Special Education | DES Gym | Sherry |
| 8:15AM - 9:15AM | Yup'ik Studies | DES Gym | Esther |
| 9:15AM - 9:45PM | Loss Control & Prevention | DES Gym | Marsh & McLennan Agency |
| 10:00AM - 11:00AM | Academic Vocabulary | DES Gym | Steve N., Charles, Dianna, & Kyle |
| 11:00AM - 12:00PM | Breakout Sessions (see below) | see below | District Staff |
| 12:00AM-1:00PM | Lunch | DES Cafeteria | |
| 1:00PM - 3:00PM | Breakout Sessions (see below) | see below | District Staff |

BREAKOUT SESSIONS

Grades K-5/6 (ALL ELEMENTARY STAFF)

11:00AM - 12:00AM

| | | |
|--------------------------------------|---------|---------|
| Giving a Schoolnet Assessment | Kyle S. | DES Gym |
|--------------------------------------|---------|---------|

LUNCH BREAK

1:00PM - 1:15PM

| | | |
|--|---------|---------|
| Analyzing Schoolnet Assessment Data | Kyle S. | DES Gym |
|--|---------|---------|

1:30PM - 1:45PM

| | | |
|--------------------------------------|---------|---------|
| Powerschool Evaluation Plugin | Kyle S. | DES Gym |
|--------------------------------------|---------|---------|

1:45PM - 3:00PM

| | | |
|---------------------------------|--------|---------|
| GoMath & Reflex Math | Dianna | DES Gym |
|---------------------------------|--------|---------|

Grades 6/7-12 (ALL SUBJECTS)

11:00AM - 12:00AM

| | | |
|--|------------------------------------|-----------|
| Academic Core Areas: Common Pacing Common Assessments & Curriculum Issues (Social Studies, Science, Lang. Arts), Math, CTE) | Charles, Dianna & Committee Chairs | SWRS D.O. |
|--|------------------------------------|-----------|

LUNCH BREAK

1:00PM - 3:00PM

| | | |
|--|------------------------------------|-----------|
| Academic Core Areas: Common Pacing Common Assessments & Curriculum Issues (Social Studies, Science, Lang. Arts), Math, CTE) | Charles, Dianna & Committee Chairs | SWRS D.O. |
|--|------------------------------------|-----------|

3:30PM

TRAVEL TO SITE BEGINS