

---

## SOUTHWEST REGION SCHOOLS - 2011 FALL INSERVICE

---



# LISTEN-LEARN-LEAD

*Niicugniluten-Elilluten-Ciuliqagten*



# LEADERSHIP INSERVICE SCHEDULE OF EVENTS

**Note to Principals and Lead Teachers:** Inservice for site administrators and district office personnel begins at 8:00AM on Wednesday, August 3, 2011. Please make your own travel arrangements to Dillingham, and plan to be in Dillingham at District Office by Tuesday afternoon, as we have a busy few days planned and a lot of exciting topics to cover. On Tuesday evening at 6:00PM there will be the annual administrator's barbecue at Noonkesser's house.

Dr. Gary Whiteley will be returning again this year to work with us on Wednesday's time will focus on several leadership, and school improvement. On Thursday, we will have sessions with Lexie Domaradzki, who joins us again this year to discuss the use of student performance data, and district personnel who will lead discussion on a variety of topics.

## WEDNESDAY - AUGUST 3, 2011

TIME	TOPIC	LOCATION	PRESENTER/FACILITATOR
7:30AM- 8:00AM	<b>Breakfast</b>	D.O. Board Room	D.O. Staff
8:00AM - 8:30AM	<b>Welcome</b> •Where we are heading... •In-Service Agenda Overview	↓	David Piazza Steve Noonkesser
8:30AM - 12:00PM	<b>Leadership &amp; Successful Communication</b> •Establishing Professional Norms •Documenting Collaborative Meetings •Identifying Our Assets •The Language of Learning		Dr. Gary Whiteley ↓
12:00PM - 1:00PM	Lunch		
1:00PM - 4:00PM	<b>Leadership &amp; Successful Communication</b> •Hypothesis Testing •Sources, Types and Uses of Data •Instructional Practice and Lenses •Collegiality & Professionalism		↓
4:00PM - 4:15PM	<b>Wrap Up</b>		David Piazza
5:00PM	Dinner (on your own)	local restaurants	



Our Wednesday presenter, **Dr. Gary Whiteley**, has been a public school educator for over thirty years. He has served in numerous roles at the school-level and district-level; including classroom teacher, school principal, and assistant superintendent. Gary was a research associate with the Center for Research and Evaluation at the University of Maine. He served in numerous capacities for the Alaska Department of Education and Early Development. Gary participated on the Technical Review Committee for the Alaska State Assessment System and assisted with negotiations with US DOE for the NCLB Accountability Workbook Plan. Gary's interest in professional development for school principals was sparked in the 1980s by involvement with the International Network of Principals' Centers at Harvard University. Dr. Whiteley has been the Director of the Alaska Administrator Coaching Project for the last five years.

# LEADERSHIP INSERVICE SCHEDULE OF EVENTS

## THURSDAY - AUGUST 4, 2011

TIME	TOPIC	LOCATION	PRESENTER/FACILITATOR
7:30AM - 8:00AM	<b>Breakfast</b>	D.O. Board Room	
8:00AM - 8:15AM	<b>Welcome</b> •Housekeeping items		David Piazza Steve Noonkesser
8:15AM - 10:15AM	<b>Instructional Program</b> •Technology •Maintenance •Personnel (HQ) •Special Education •Business Office •State & Federal Programs •Media Services •Assessment/Counseling •Student Services		District Office staff
10:15AM - 10:30AM	Break		
10:30AM - 11:30AM	<b>STEPP Preparation &amp; Implementation</b>		Angela Love (EED) Elizabeth Davis (EED)
11:30AM - 12:30PM	Lunch		
12:30PM - 1:30PM	<b>Using Data for Improvement</b>		Lexie Domaradzki (REACH)
1:30PM - 4:00PM	<b>Instructional Program</b> •Curriculum (Lang. Arts, Math, Yup'ik Studies) •Scheduling Issues •Instructional Materials •Staff Development Plan		David Piazza, Steve Noonkesser, Les Parks, Esther Ilutsik, Deb Endicott, Bob & Carol Thompson
4:00PM - 4:15PM	<b>Travel Information &amp; Wrap Up</b>		David Piazza Lee Ann Andrew



Our Tuesday presenter, **Lexie Domaradzki's**, primary areas of expertise are early childhood and kindergarten through Grade 12 reading, with emphases on research-based instruction for beginning readers and school reform. As a Research Associate at RMC Research, Ms. Domaradzki provided technical assistance on the implementation of Reading First grants to the Northwest State Cluster Team for the National Reading Technical Assistance Center. She also provides consultation and professional development services to the Alaska Staff Development Network in support of developing and implementing a data driven assessment system in the area of reading. Her responsibilities include coordinating with state and national stakeholders, conducting statewide webinars, and providing technical assistance to district and state leaders. Prior to joining RMC Research Ms. Domaradzki served as the Assistant Superintendent of Teaching and Learning for the Washington State Office of Superintendent of Public Instruction. During this time she worked actively with legislators, the Governor's office, the State Board of Education, and large education organizations to review policy and make recommendations.

# NEW STAFF INSERVICE SCHEDULE OF EVENTS

**Note to New Staff Members:** Inservice for new staff members begins at 8:00AM (breakfast at 7:30AM) on Friday, August 5, 2011. Please plan to be in Dillingham at District Office by Thursday night, as we have a few very busy days planned and a lot of relevant topics to cover. Afternoon activities on Saturday may be altered due to inclement weather. If you need help with travel arrangements, please do not hesitate to contact your site administrator or district office for assistance.

## FRIDAY - AUGUST 5, 2011

TIME	TOPIC	LOCATION	PRESENTER/FACILITATOR
7:30AM - 8:00AM	Breakfast	D.O. Board Room	
8:00AM - 8:30AM	<b>Welcome</b>		David Piazza
8:30AM - 8:45AM	<b>In-Service Agenda Overview</b>		Steve Noonkesser
8:45AM - 9:30AM	<b>Technology</b>		Steve Noonkesser, Les Parks & Corey Evans
9:30AM - 10:30AM	<b>Survive and Thrive in Rural Alaska</b>		Steve Ito & Steve Noonkesser
10:30AM - 10:45AM	Break		
10:45AM - 11:15AM	<b>Student Assessments</b>		Steve Ito
11:15AM - 12:00PM	<b>Business Office</b>		Lee Ann Andrew & Denise Gregoire
12:00PM - 1:00PM	Lunch		Staff
1:00PM - 1:30PM	<b>Personnel/Teacher Certification</b>		Barb Luckhurst
1:30PM - 1:45PM	<b>Highly Qualified</b>		Jon Clouse
1:45PM - 2:00PM	Break		
2:00PM - 2:45PM	<b>Student Records/PowerSchool/Grades &amp; Media Center Tour (2 groups)</b>		Nate Preston, Shannon Clouse & Deb Endicott
2:45PM - 3:45PM	<b>Special Education</b>		Robin Gray
3:45PM - 4:00PM	<b>Wrap Up</b>		David Piazza
5:00PM	Dinner (on your own)	local restaurants	Staff

## SATURDAY - AUGUST 6, 2011

TIME	TOPIC	LOCATION	PRESENTER/FACILITATOR
7:30AM - 8:00AM	Breakfast (District Office Boardroom)	D.O. Board Room	Staff
8:00AM - 8:15AM	<b>Welcome &amp; Introductions</b>		David Piazza
8:15AM - 12:00PM	<b>Introduction to Teaching in Rural Alaska</b>		Esther Ilutsik, Fanny Parker, Nancy Sharp, Anuska Wysocki
12:00PM - 1:00PM	Sandwich Sack Lunch - Travel to outdoor site		Staff
1:00PM - ?	<b>Outdoor/Cultural Activities</b>		Local Staff

# ALL STAFF INSERVICE SCHEDULE OF EVENTS

**Note to Returning Staff Members:** Please plan to be in Dillingham at District Office by Sunday night, as we have a busy few days planned and a lot of relevant topics to cover. Contact your site administrator for travel times and arrangements.

## MONDAY - AUGUST 8, 2011

### OVERVIEW OF DAILY SCHEDULE

TIME	TOPIC	LOCATION	PRESENTER/FACILITATOR
7:00AM - 7:45AM	Breakfast	DES Cafeteria	
8:00AM - 8:15AM	<b>Welcome &amp; Schedule Updates</b>	DES Gym	David Piazza
8:30AM - 12:00PM	<b>Group Sessions</b>	see below for schedule	
12:00PM - 1:00PM	Lunch	DES Cafeteria	
1:00PM - 3:45PM	<b>Group Sessions</b>	see below for schedule	
3:45PM - 4:00PM	<b>Wrap-up Session</b>	DES Gym	David Piazza
5:00PM	Dinner on your own	local restaurants	

### GROUP SESSIONS

PARTICIPANTS	LOCATION	8:30AM - 12:00PM	1:00PM - 4:00PM
<b>K-6 staff</b>	<b>TBD</b>	<b>Trait-Based Writing Across Content Areas</b>	<b>Trait-Based Writing Across Content Areas</b>
<b>7-12 staff</b>	<b>TBD</b>	<b>Content Area Meetings</b> (Math, Language Arts, Science, Social Studies, Career/Technical Education, Counselors)	<b>The One-to-One Classroom</b> (overview of tools for teaching in a technology-rich environment)



**Gayle Miller** will be our presenter for the next two days on Trait-Based Writing Across Content Areas. With 35 years of educational experience, Gayle's career has included middle, high school, and elementary classroom teaching; development and implementation of a nationally recognized model for at-risk youth; and curriculum, instruction, and staff development in both district and state departments of education. Gayle used the Traits in her own classroom for six years, and then supported teachers and colleagues in the implementation of the Trait model for another 20! Her educational background includes an M.Ed in Administration and Supervision with +30 in Curriculum & Instruction; an M.A. in history; and B.A. degrees in history and elementary education.



**Les Parks** has been with SWRS for 16 years. In addition to his teaching certification, Les has a background in mathematics and computer programming. Les enjoys fly fishing, bicycling, adventure motorcycling, and flying R/C aircraft.



**Corey Evans** has been with SWRS for 10 years. He has been a part of the district-wide technology support team for four years. When he's not cutting wood for a hungry stove he enjoys being outside.

# ALL STAFF INSERVICE SCHEDULE OF EVENTS

**TUESDAY - AUGUST 9, 2011**

## OVERVIEW OF DAILY SCHEDULE

TIME	TOPIC	LOCATION	PRESENTER/FACILITATOR
7:00AM - 7:45AM	Breakfast	DES Cafeteria	
8:00AM - 9:00AM	<b>Staff Awards &amp; Recognition</b>	DES Gym	David Piazza
9:00AM - 12:00PM	<b>Group Sessions</b>	see below for schedule	
12:00PM - 1:00PM	Lunch	DES Cafeteria	
1:00PM - 3:45PM	<b>Group Sessions</b>	see below for schedule	

## GROUP SESSIONS

PARTICIPANTS	LOCATION	9:00AM - 12:00PM	1:00PM - 3:45PM
<b>K-6 staff</b>		<b>Reading Mastery</b>	<b>Reading Mastery</b>
<b>7-12 staff</b>		<b>Trait-Based Writing Across Content Areas</b>	<b>Trait-Based Writing Across Content Areas</b>

**Reading Mastery Support Team** We are excited this year to have a talented team of our own SWRS staff working with K-6 staff on effective implementation of our new elementary language arts core curriculum resource - Reading Mastery. The group attended training this summer in Laramie, Wyoming and has worked hard to create a relevant staff development opportunity based on familiarity with our students and classrooms.



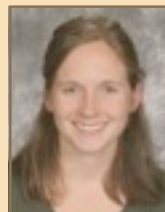
Lida Storch



Shannon Clouse



Pam Johnson



Kirsten Tesch



Deb Endicott



Meridy Mabry



We are also very pleased that Bob and Carol Thompson, of Expect Educational Excellence, in Palmer, Alaska have agreed to return to us from retirement, to lend their many years of experience to the training and their support to our team. Bob and Carol will also be working with staff throughout the fall in college course format on several topics related to reading and writing instruction.

## CLOSING SESSION

3:45PM - 4:00PM	<b>Wrap-up Session</b>	DES Gym	David Piazza
5:00PM	<b>All Staff BBQ</b>	SWRS D.O.	Administrators



# ALL STAFF INSERVICE SCHEDULE OF EVENTS

**WEDNESDAY - AUGUST 10, 2011**

## SESSION OVERVIEW

TIME	TOPIC	LOCATION	PRESENTER/FACILITATOR
7:00AM - 7:45AM	Breakfast	DES Cafeteria	
8:00AM - 9:00PM	<b>K-5 Mathematics</b>	TBD	Pam Johnson & Les Parks
	<b>6-12 Powerschool</b>	TBD	Nate Preston
9:15AM-9:45AM	<b>Instructional Focus</b>	DES Gym	David Piazza, Steve Noonkesser & Esther Ilutsik
9:45AM-10:30AM	<b>Blood Borne Pathogens</b>	DES Gym	Polly Swick
10:45AM-11:30AM	<b>Domestic Violence/Sexual Assault Child Abuse &amp; Neglect</b>	DES Gym	OSC Staff
11:30AM-12:30PM	<b>Student Voice</b>	DES Gym	Dana Bartman & students
12:30PM-1:30PM	Lunch	DES Cafeteria	
1:30PM-4:00PM	<b>Travel Begins to Sites</b> (Special Ed and Yup'ik Studies staff return home on last flight)		
1:30PM-3:30PM	<b>Special Education Topics</b>	TBD	Robin Gray
1:30PM-3:30PM	<b>High School Yup'ik Studies Course</b>	TBD	Esther Ilutsik

**Communication is the heart of community.  
Community is the heart of learning.**

*Qalaruciyaraq ciuqliuluk yuut ayagniutekaat elitnaurutmun.*

# MAP OF DILLINGHAM & LOCAL SERVICES

## City Center Map:

### Restaurants

21	The Muddy Rudder	842-2634
A	Windmill Grille	842-1205
14	Bayside Diner	
3	Bristol Eagle	842-4453
C	Twin Dragon	842-2172

### Lodging

14	Bristol Inn	842-2240
27	Dillingham Hotel	842-5316
39	Thai Inn	842-7378
J	Beaver Creek Bed & Breakfast	842-7335

### Grocery Stores

16	N&N Market	842-5283
22	A.C. Company	842-5444
G	Teddy's Convenience Store	842-2881
D	Bigfoot	842-4737

### Gift/Variety Stores

36	Museum Gift Shop	842-5115
18	Katey Kuspiak	842-1259
B	Cracker Box	842-4440
25	Nagley Variety	842-5558

### Sporting Goods

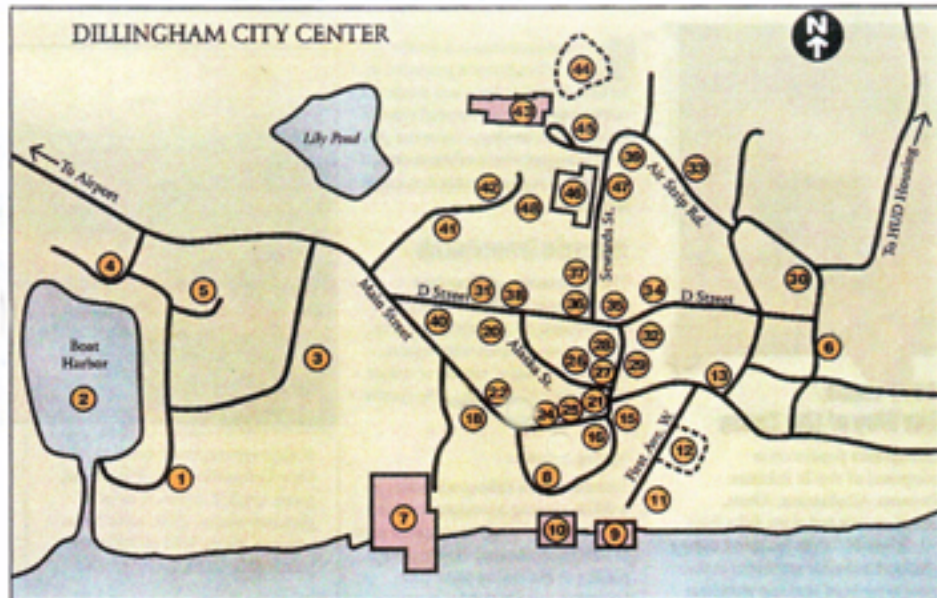
28	L&M Supplies & Hardware	842-5341
22	A.C. Company	842-5444
16	N&N Market	842-5283

### Entertainment

8	Sea Inn	842-2233
I	Willow Tree Inn	842-5513

### Taxis/cabs

6	Nashagak Cab Co.	842-4403
---	------------------	----------



### Laundries

23	Dillingham Laundry	842-9988
----	--------------------	----------

### Banks

35	Wells Fargo	842-5284
----	-------------	----------

### Commercial Fishing & Processing

7	Peter Pan Seafoods, Inc.	842-5415
11	Iceberg Seafood	842-5204

### Contractors/Suppliers

J	Alaska West Supply	842-5500
W/R	Bonetti Enterprises	842-2270
F	D&J Constructors	842-2222

### Services & Facilities

36	Chamber of Commerce/Visitor Center	842-5115
----	------------------------------------	----------

### City

2	Boat Harbor	842-3644
38	Police Department	842-5354
40	Fire Department	842-2288
9, 10	City Dock	842-5516
15	City Hall	842-5211
36	Sam Fox Museum	842-5115
36	Library	842-5618
30	Senior Center	842-1231
46	High School	842-5221
43	Elementary School	842-5642
4	Harbor Master	842-1069
5	Bath House	
23	Old Airstrip Park	
29	Potato House	842-2464
1	Camping Area	

### Other Sites

12	Historic Cemetery	
44	Softball Field	
31	Ice Hockey Rink	

### U.S. Government

13	Togiak National Wildlife Refuge	842-1063
34	Post Office	842-5633
H	Kanukuk Hospital	842-5281

### State of Alaska

37	University of Alaska Fairbanks, Bristol Bay Campus	842-5189
45	Court House	842-5215
42	Wood-Tikchik State Park	842-2375
41	State Troopers	842-5641
26, 48	Alaska Dept. of Fish & Game	842-5227

Business listings and various government listings are a sampling of our area and may not include all of the various facilities in Dillingham.



### Area Map

A	Murphy's Ricardo's	842-1205	F	D&J Rentals	842-2222
B	Cracker Box	842-4440	G	Teddy's Convenience Store	842-2881
C	Twin Dragon	842-2172	H	Kanukuk Hospital	842-5281
D	Bigfoot	842-4737	I	Willow Tree Inn	842-5513
E	Russian Orthodox Church	842-5470	J	Beaver Creek Bed & Breakfast	842-7335
F	D&J Constructors	842-2222	J	Alaska West Supply	842-5500