



Updated March 5, 2024

# COVID-19 Mitigation Plan

---

[www.swrsd.org](http://www.swrsd.org)  
907-842-5287

A decorative footer bar at the bottom of the page consists of a thin yellow stripe on top and a thick blue stripe below it.

# Table of Contents

Standard Operations Plan .....	2
School Schedule .....	2
Meeting the Needs of Students with Exceptional Needs .....	2
Health and Safety Protocols .....	3
- <i>Masking</i>	
- <i>Social Distancing</i>	
- <i>Personal Hygiene</i>	
Transportation .....	3
Facilities Use & Disinfecting/Cleaning .....	3
Student Activities and District Travel .....	3
Symptom Free Facilities .....	3
Vaccinations .....	3
Response Protocol .....	3

Updated March 5, 2024

Southwest Region Schools

[www.swrsd.org](http://www.swrsd.org)

907-842-5287



# Standard Operations Plan

This school year we will be operating under a Standard Operations Plan. Our focus will be on maintaining as normal a school year as possible, resorting to enhanced measures only when necessary and in as limited a fashion as is consistent with the health and safety of our students, staff, and communities.

**If cases arise in our communities, we will address the situation one community at a time, assessing risk and responding in a measured fashion.**

---

## School Schedule

- All students will attend a full day of on-site instruction.
- School will operate at 100% capacity.
- School will begin at 9:00am across the district without staggered start times.

---

## Meeting the Needs of Students with Exceptional Needs

- Students will attend and receive all planned services.
- All planned services, evaluations, and assessments will be on-site with precautionary measures as needed.
- Itinerant-related providers will deliver in-person and online services



# Health and Safety Protocol

## Masks

- Students and staff may choose to wear masks within the building.

## Social Distancing

- Social distancing is not recommended

## Personal Hygiene

- Staff will encourage thorough hand washing with soap and water for at least 20 seconds and/or the safe use of hand sanitizer.

## Transportation

- Masks will be optional for all occupants on the bus.

## Facilities Use

- School facilities will be open to visitors and activities outside of the school day.

## Disinfecting/Cleaning

- Enhanced sanitation may continue as needed.

## Student Activities and District Travel

- Student activity related and district related travel is permitted.
- Spectators are allowed to attend activities.

## Vaccination

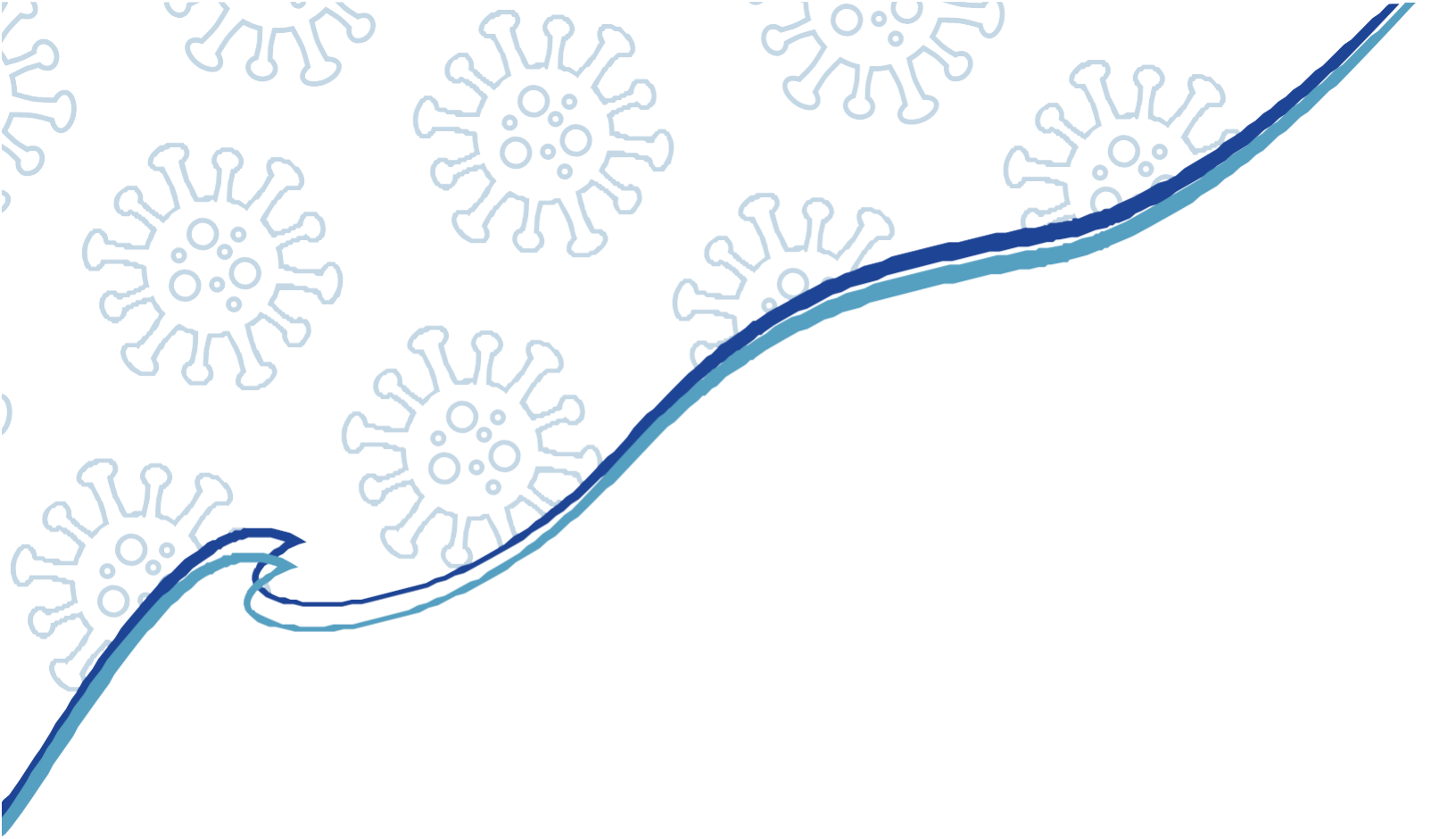
- For more information contact the Bristol Bay Area Health Corporation (907-843-5287)

## Response Protocol

### Positive COVID-19 Test

It is recommended, not required, that staff and students stay home and away from others until at least 24 hours after both their symptoms are getting better overall, and they have not had a fever (and are not using fever-reducing medication).





Published March 5, 2024  
Southwest Region Schools  
[www.swrsd.org](http://www.swrsd.org)  
907-842-5287