



Southwest Region Schools

Information and Technology Department

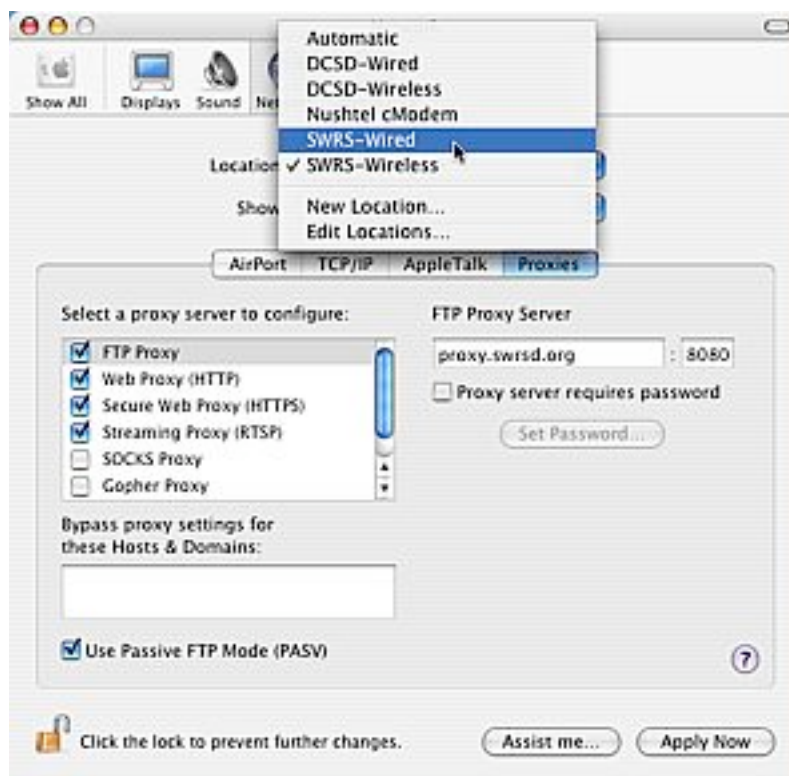
Site Technology Liaison Training and Reference Series

Subject: SpEd Teacher's GoalView Proxy Server Bypass

This configuration setting will allow the SpEd staff to connect to the GoalView interface without encountering timeout errors. The change needs to be made to both the Wired and the Wireless Locations in the Network pane of System Preferences as specified below for all staff members utilizing the GoalView interactive website.

Here is how you do it:

1. Log in using your staff sysop account, then start System Preferences and choose the Network pane.
2. Set the Location to Wired, then enter the address string exactly as `https://*goalview.com` into the Bypass proxy settings for... field in the lower left of the dialogue box and press the Apply Now button.





3. Repeat the process for the Wireless Location.

Note: You may have to unlock the padlock in the lower left of the dialogue box with your staff sysop user name and password to allow changes.